



# SIMPLE LIFE



SIMPLE LIFE



## Medway Close, Sheffield

£1,350 PCM

Welcome to Simple Life's East Hill Gardens.. East Hill Gardens is just 1 mile away from Sheffield city centre. Immediately adjacent to the site, you will find a tram stop which supplies regular transport in to the heart of the city. The A61, inner city ring road and main line train station all within 1 mile of the site.

The Hazel offers bright and spacious accommodation throughout with a large fully-fitted kitchen/dining room just off the hallway.

To the rear of the property sits an impressive living area with French windows, offering views on to your garden space. Beautiful and light during the summer months. The first floor offers four bedrooms: two double bedrooms and two single rooms, with a family bathroom.

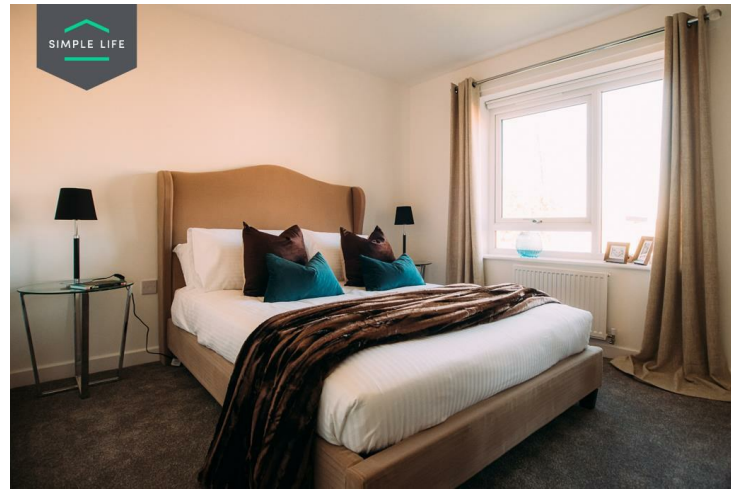
The Royal Hallamshire Hospital is just a 2 mile drive away and The University of Sheffield and Sheffield Hallam University are both within easy commuting distance. Heritage and Norfolk Park are also within an easy walk from the site.

As well as sitting close to the city centre, there's plenty of shops and good local schools nearby.

To visit East Hill Gardens, please use postcode S2 3PS in your Satnav.

Deposit £1550  
Council Tax B  
Unfurnished  
Available 14th July 2025





## Key Features

- Car Parking Space
- Dishwasher
- Washing/drying machine
- Carpets up the stairs and in the bedrooms
- Blinds in the bedrooms
- Security Alarm
- Fridge-freezer
- Modern kitchen worktops and units
- Private back garden

## Location

